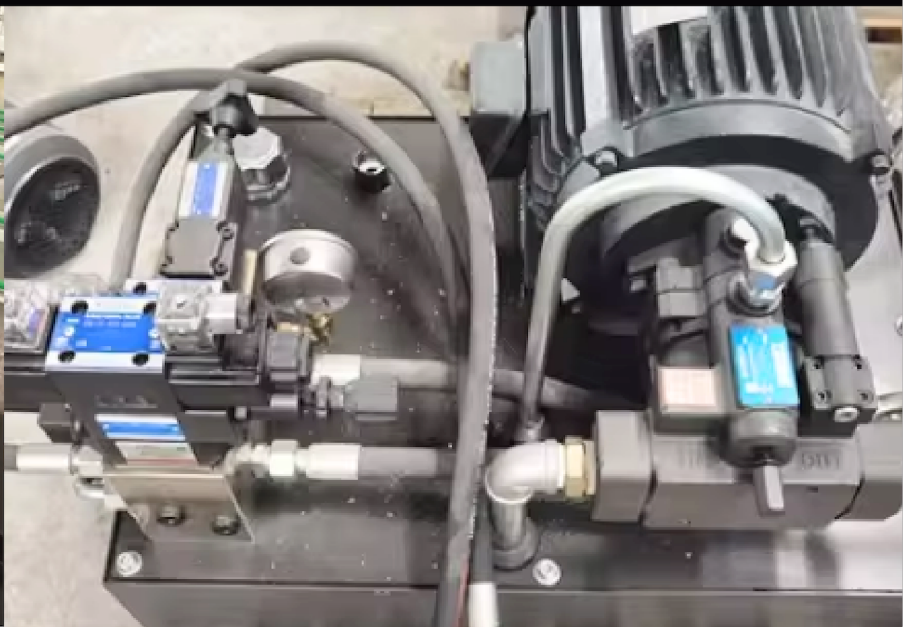
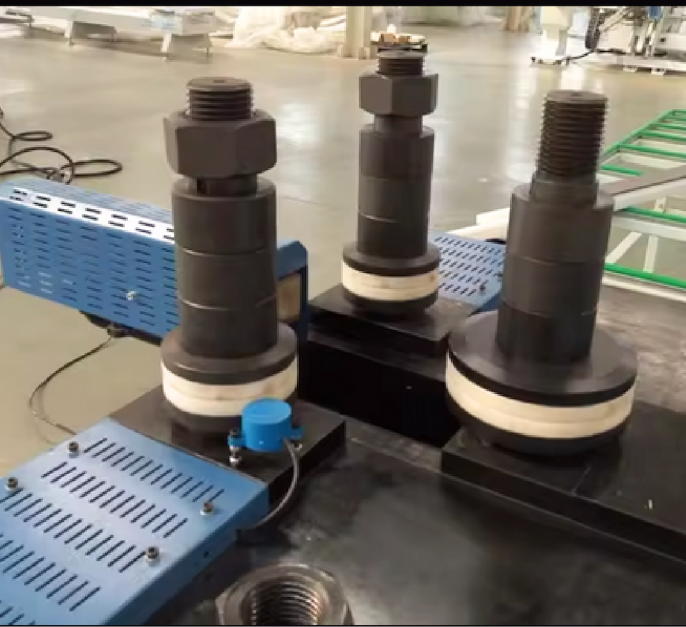




# MTE MACHINES

## ALUMINUM PROFILE BENDING MACHINE





# MTE MACHINES

C-shaped



Round/Oval

U-shaped



Breadfruit

Half circle



Abnormity



S-shaped



Large section



Copper bending arc



- The machine has three motivated driving rollers that can avoid sliding during running.
- The max hydraulic pressure can be reached 25T that brings the easily bending of all kinds of aluminum profile and window sash (rectangular steel tube)
- Three rollers are controlled by CNC system with features of smooth moves and high precision. Positional accuracy: +/-0.01mm.
- It not only can be bended into one radius arc (ordinary type C arc), but also two radius arcs (type U arc), and three radius arc (bread arc and ellipse).
- With the function of intelligent calculation of material spring back amount and compensation, aiming at the same bend radius arc, the machine can calculate the spring back amount automatically that can avoid waste of material and time during forming different kind of arc.



- The machine can store a certain amount of procedure (depend on memory space), input information as detail as possible for easy recognition during next use.
- It can bend all kinds of aluminum profile (ordinary aluminum profile, thermal break aluminum, aluminum-plastic-aluminum, aluminum plastic), rectangular steel tube, etc.
- The horizontal placing of machine can adapt to different kinds of profile in different size and weight.
- It is flexible operating that can be controlled manually or automatically.
- Various feeding speed can be adjusted during every procedure, which improves the workpiece quality and meets the requirement of productivity.
- Mould is simple and useful; it can bend aluminum with radius 250 mm without wrinkles.



**INPUT POWER 5.2 KW**

**WORKING PRESSURE 0.2 MPA**

**MIN. DIAMETER OF BENDING 60 MM**

**MAX. WIDTH OF PROFILE 150 \* 180 MM**

**MAX. DIAMETER OF ROLLS 200 MM**

**LOWER SHAFT CENTER-DIMENSIONS**

**350 - 750 MM**

**HYDRAULIC CYLINDER PRESSURE 25T**

**ROLLER-HOLDING SHAFT DIAMETER 65  
MM**

**ROTATION SPEED OF SHAFT 1-8 R/MIN**

**POSITIONING PRECISION  $\pm 0.01$ MM**

**TOP ROLL RUNOUT 280MM**

**TORQUE 2500N.M**

**MACHINE WEIGHT 1000KG**